



LINÉ RINGTVED THORDARSON

SCULPTURES

**"SENSITIVITY,
FRAGILITY AND
STRENGTH"**

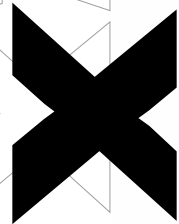


"Joy" varnished bronze 28 cm H

"Paradise tales. Liné's new sculptures exude erotic feelings which blossom and open up. Eroticism has been a permanent feature of Liné's works from the beginning, but it has grown in scale and expression, almost with a desire to meet the audience in an uplifting and liberating way. The sensuality has been released and has become a way of expression, which means that Liné progressively frees herself from the art historical models that have accompanied her, and instead sets up her own independent merge: Goddesses in paradise tales from the garden of sensuality. As the poet Pia Tafdrup has called it, 'a spring tide of happiness'."

Erik Meistrup. Art critic and Culture editor

EXPECTATION



"In the gallery I immediately noticed Liné's sculpture "expectation", the figure's sensual passion seemed overwhelming from all angles. I had to take a closer look at it, bought it and brought it home. It reveals still more about more nuanced modes, perhaps a loneliness, not irreparable as it is metamorphosed into protest, will and energy in a wild vibrating power of expression. Behind lies a longing (and Longing, is what I call it myself) for something that may or may not exist – in the past or in the future. What "expectation" expresses is existential and common to all mankind."

Johan Bender. Historian and Author



"Expectation" bronze 41 cm L



"Zephora" (The one who is admired by many) bronze 62 cm

"The virtuosity, the technical superiority with which she masters the material, the elegant and elongated female figures, whose dynamic movements are driven from their point of origin and led to excess, their often Ellusive contact with the pedestal, which they seem to be taking off from, despite the material gravity, the raw, rough and sketchy surfaces that dissolve accentuated projections and threaten to blur the sculptural forms, all drawing on a Mannerist vocabulary, connecting Liné Ringtved Thordarson to the art historical tradition, more specifically the art of the 15th century that heralds the modernity and mimes, sneers and distorts a changing and unstable world. "

Katrine Marie Højlund. MA. Art History

"Sensitivity, fragility and strength. Three arrows in Liné's art quiver that are launched off in a variety of paces - and that hit you right in your face - if you do not duck. So don't. See them. Take them. Enjoy it."

Jan Balling. Artist and Colleague



"Blindfolded" bronze 27 cm L



"Nostalgia" bronze 33 cm H

"In Clamp" bronze 48 cm H

"Liné Ringtved Thordarson's new works express more vulnerability and sensitivity. Strong emotions are at stake. Feelings you cannot escape. It is expressed clearly and concisely, what the artist's expression is all about."

Bente Hammershøy. Art historian



"In my experience Liné, with her works, offers the viewer a more profound understanding of the woman's – the human beings, acceptance of its instincts and emotions, which in this society still are associated with much taboo ... meanwhile she elevates the feelings with such a beautiful physical aesthetics, that compensates for the forbidden. The reckoning thus ends up refining the forbidden so much that it becomes ideally beautiful – which I find an important story to tell in our times ... That is why she is so important ... "

Sussi Trampedach. Painter and Colleague



"Fantasy" bronze 40 cm L



"Fear" bronze 26 cm L



"Liné Thordarson's art has evolved greatly over the years. The first impression I got was of a dream-based art, which always started from the body. The female body for the most part. In recent years so many more layers have been added in Line's sculptures that the dream bubble bursts into a thousand pieces. Erotic, realistic, neurotic information bombards the viewer so strongly that the characters become living beings that are impossible to pin down. This gives them an active life in our minds. Line's sculptures show us the complexity and contradictions of ourselves."

Jon Gislason. Artist and Colleague



"The Secret" bronze 158 cm



I own one of Liné's sculpted figures, maybe owning is too much to say, because the figure in the sculpture is so much Liné. Maybe I only borrowed her indefinitely The physical body and Liné's sculptures are one and the same thing – Liné and the sculpture – the sculpture and Liné.

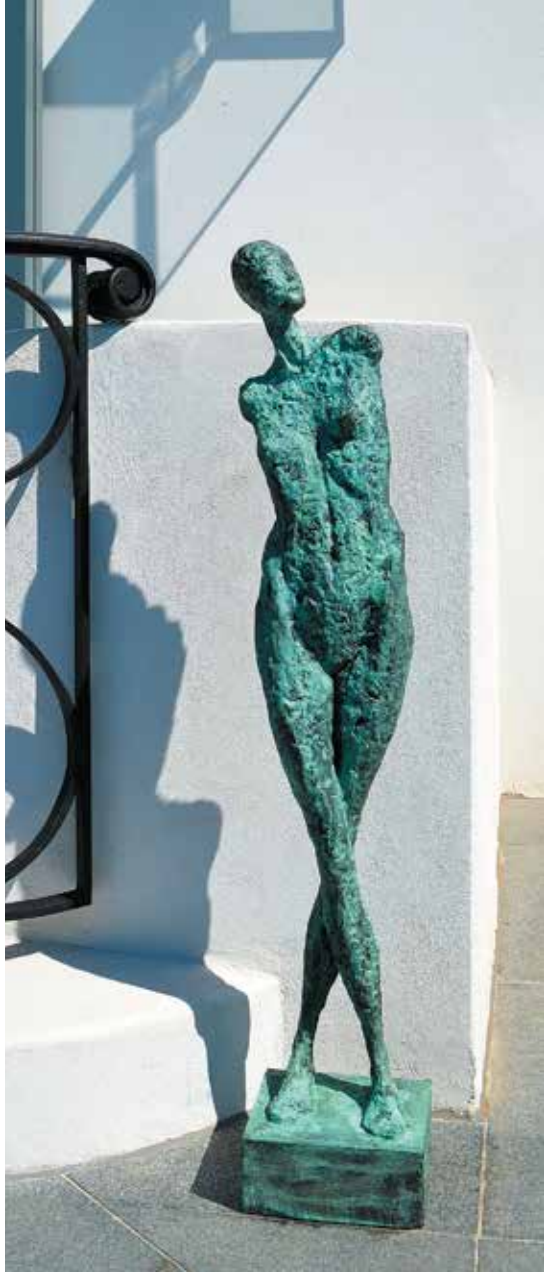
Ingerlise Vikne. Painter and collage



"Serenity" bronze 55 cm

ART ON YOUR SPOT

IN SOUTH OF FRANCE AND IN DENMARK



GET YOUR VERY OWN HOUSE ARTIST!

I create a personal unique bronze sculpture at YOUR place. A visit to your home - a talk about the kind of sculpture that will match perfect to your inside or outdoor setting. I work on the site and you can follow the creative process. We will find the right place for the sculpture - eventually on a pedestal and with spots on...

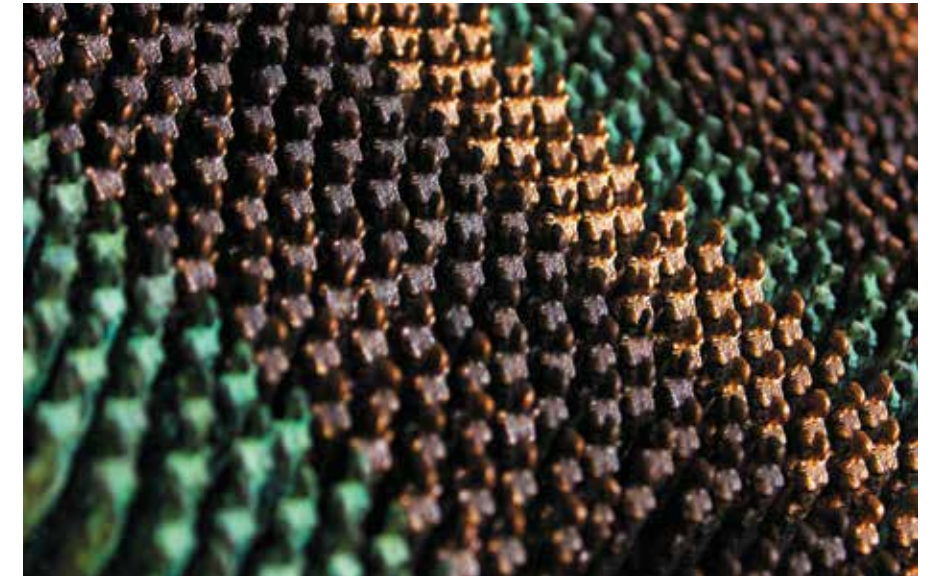


"Courage" bronze 91 cm



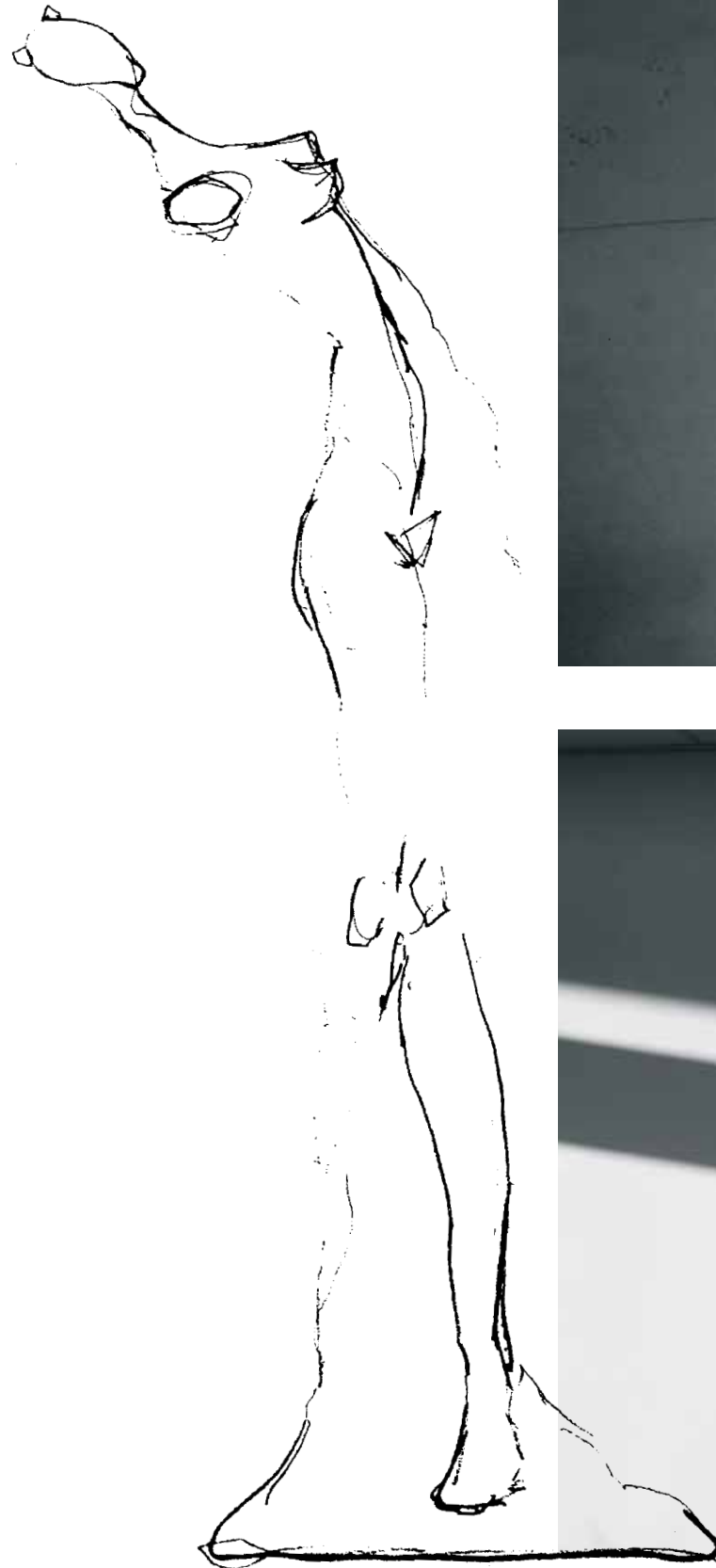
"David" bronze 63 cm







"Tailwind" 2.20 m high





"Infinity" concrete 1.80 m high



"Take me" varnished bronze 30 cm





ON WOOD 52 x 32 cm



ON WOOD 70 x 35 cm



ON WOOD 66 x 20 cm



ON WOOD AND BRONZE 26 x 18 cm



ON WOOD AND BRONZE 62 x 44 cm



"As pyknisk-athlete, I cannot renounce my fascination with the leptosomatic human being and therefore I have a natural interest in Line's works which through their elongated, elegant, sensual, aesthetic spaces have an abstract referential association to the feminine pedestal, as a seasoning on life's muse itself, visually stimulating masculine chest hair."

Bredtved. Artist and Colleague



"Bound" varnished bronze 39 cm

"Talented and booming. Significantly different from her peers. Her works are a reflection of reality as an artist, not least as a woman. A subtle travel in these worlds."

Ove Torp. Art Critic



"In Boots" varnished bronze 37 cm

"SHANGHAIWOMAN"

Shanghai - city of contrasts - "told" through a woman's body

Growing strong out of nowhere, while remaining humble

On the way forward, while leaning faithfully against the past

Mild with a diabolical power

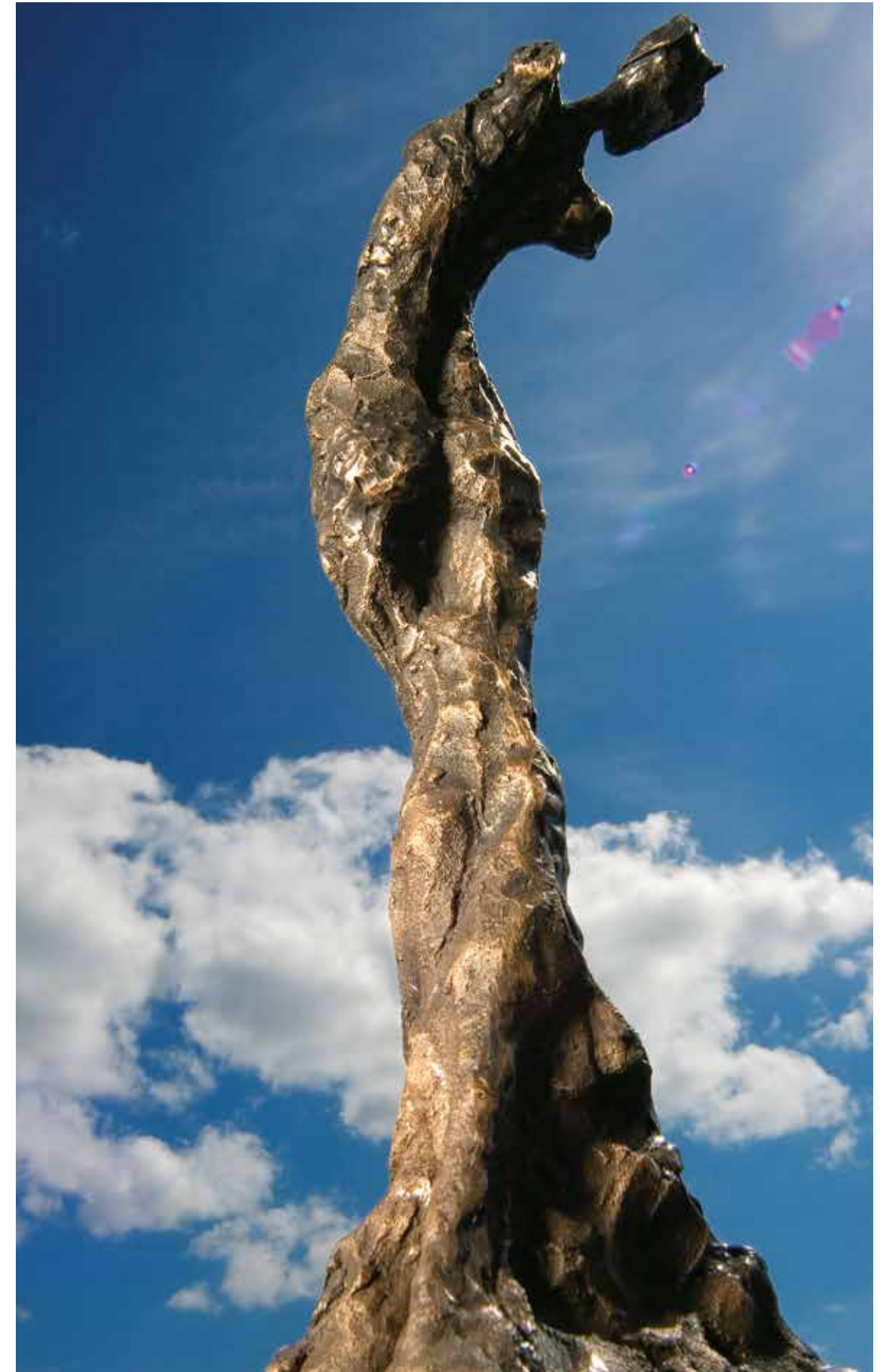
Standing firmly rooted, yet floating dreamily

Winding at every opportunity, while remaining faithful to her own axis

Opening up against the whole world from Shanghai's center,

while remaining self-contained

(Draft to 7 m high bronze sculpture for public space in Shanghai, China)







"Care" bronze 29 cm L

"Several of Liné's sculptures do not move, they are caught in a kind of stagnant. A small variation in the patinated bronze or a slight change in the posture causes, however, that the sculptures imperceptibly merge into a state of vulnerability, sex or sense. Never sensation. Out of a humble design the seeking human reveals herself. Even when the sculptures move, it is not with obvious interest in arabesque formations in the surrounding space. Rather than merging with the room, they are more likely present as a kind of introvert exposure of the human body's mental anatomy. It is in this field of similitude and tactile presence, the sculptural poetry has its source."

Jørgen Holdt Eriksen. Art Historian



"Carmen" bronze 52 cm

A stream of passion

"Liné Ringtved Thordarson's sculptures ooze sensuality. One might be tempted to describe her form as "a lava stream of passion", but in all the solid material and where the bronze, which is Thordarson's preferred material, may seem hard and impenetrable, an expression of organic life and contagious passion emerges. At the same moment you register the force of lust the characters' fragility is revealed. Suddenly they appear bare, and as if they find themselves out of sight - free from the voyeur's inquiring gaze and in a private space. But they are not! They are exhibited and in a state beyond any modest consciousness."

Lars Svanholm. Art Critic



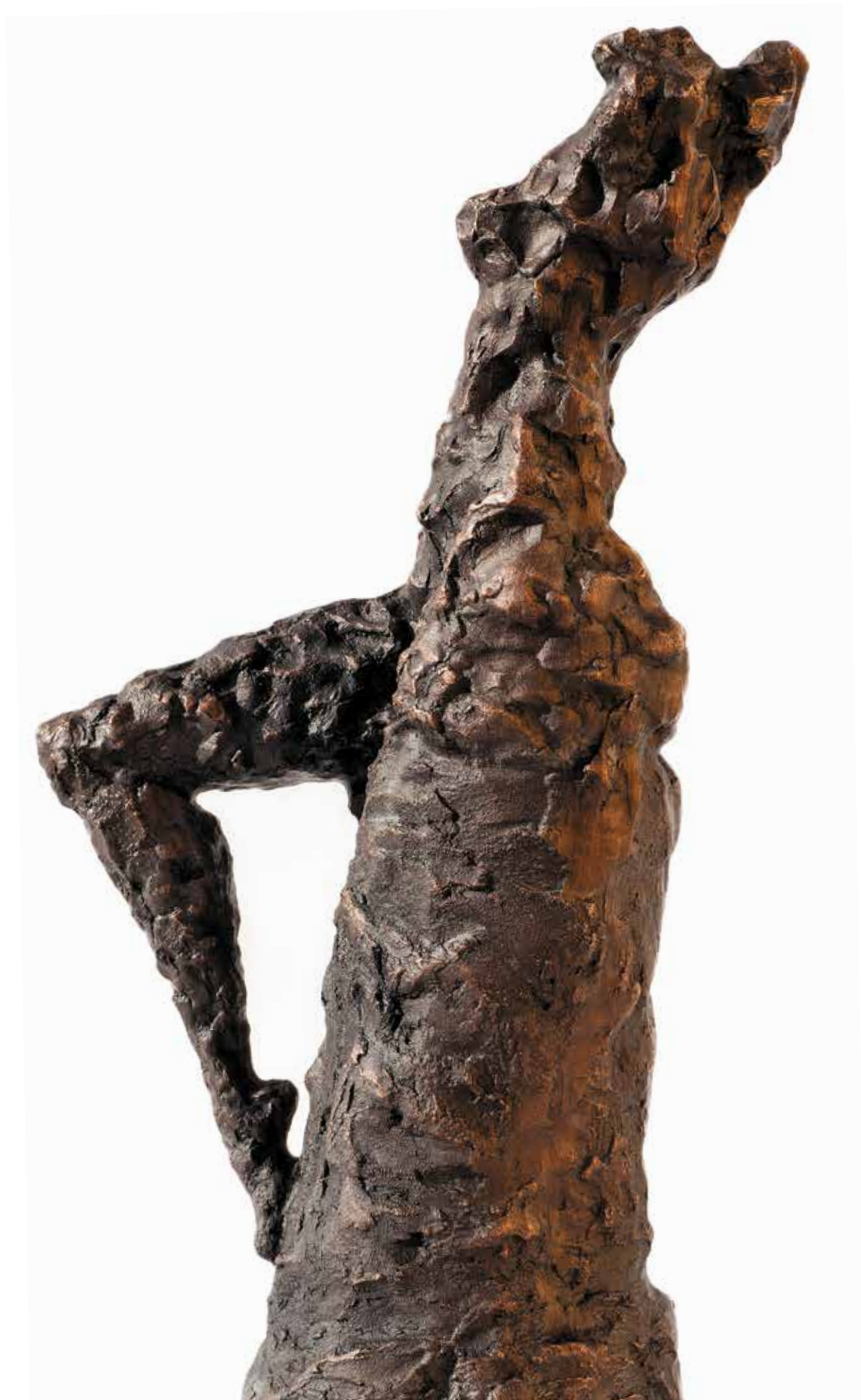
"Presence" bronze 50 cm



"Speeded mind sculptures with more than ordinary insight into the female body's sculptured oddities – apparently she dares – see herself!"

Klaen. Artist and Colleague

"Yes" bronze 29 cm L



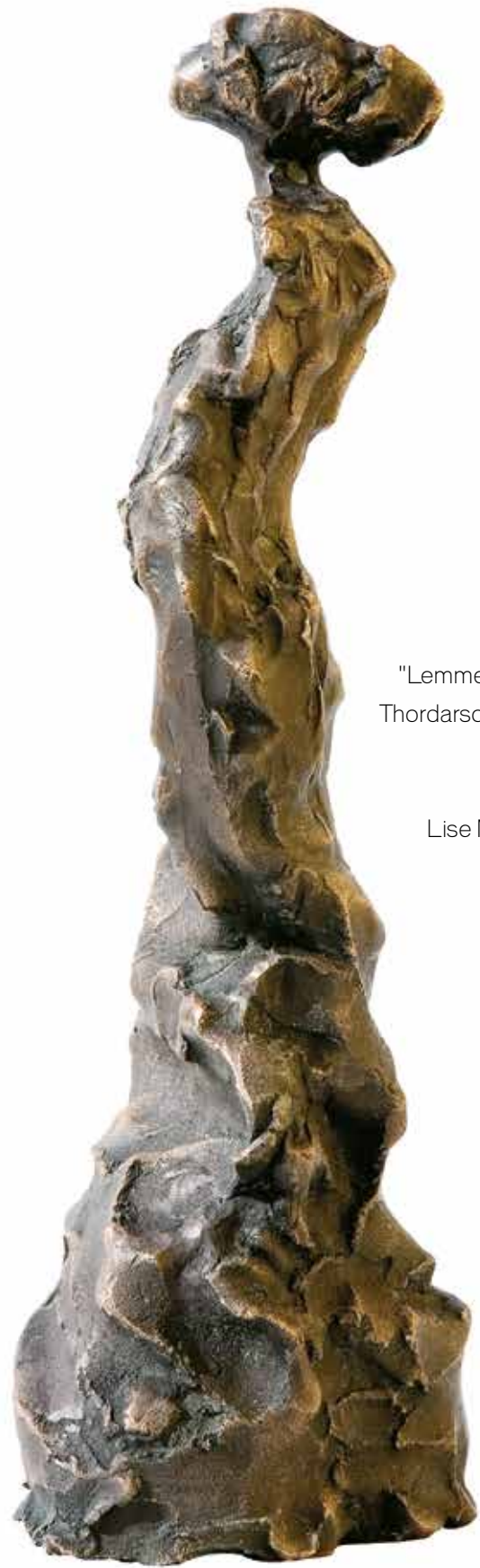
"Glamorous" bronze 48 cm



"There is a certain inspiration from classical naturalism. Liné Ringtved Thordarson develops her sculptures in an entirely personal way with a theme which revolves around the female universe of experience and is characterized by a great psychological insight."

Tom Jørgensen. Art critic and editor of Danish art magazine

"Sara" – woman of high rank – bronze 88 cm



"Lemmerz has called his sculptures 'poisoned chocolate', but Liné Thordarson's art is – as the artist herself – simply chocolate: soft, deep, strong and addictive."

Lise Mark. Associate Professor, MA. Art History and English



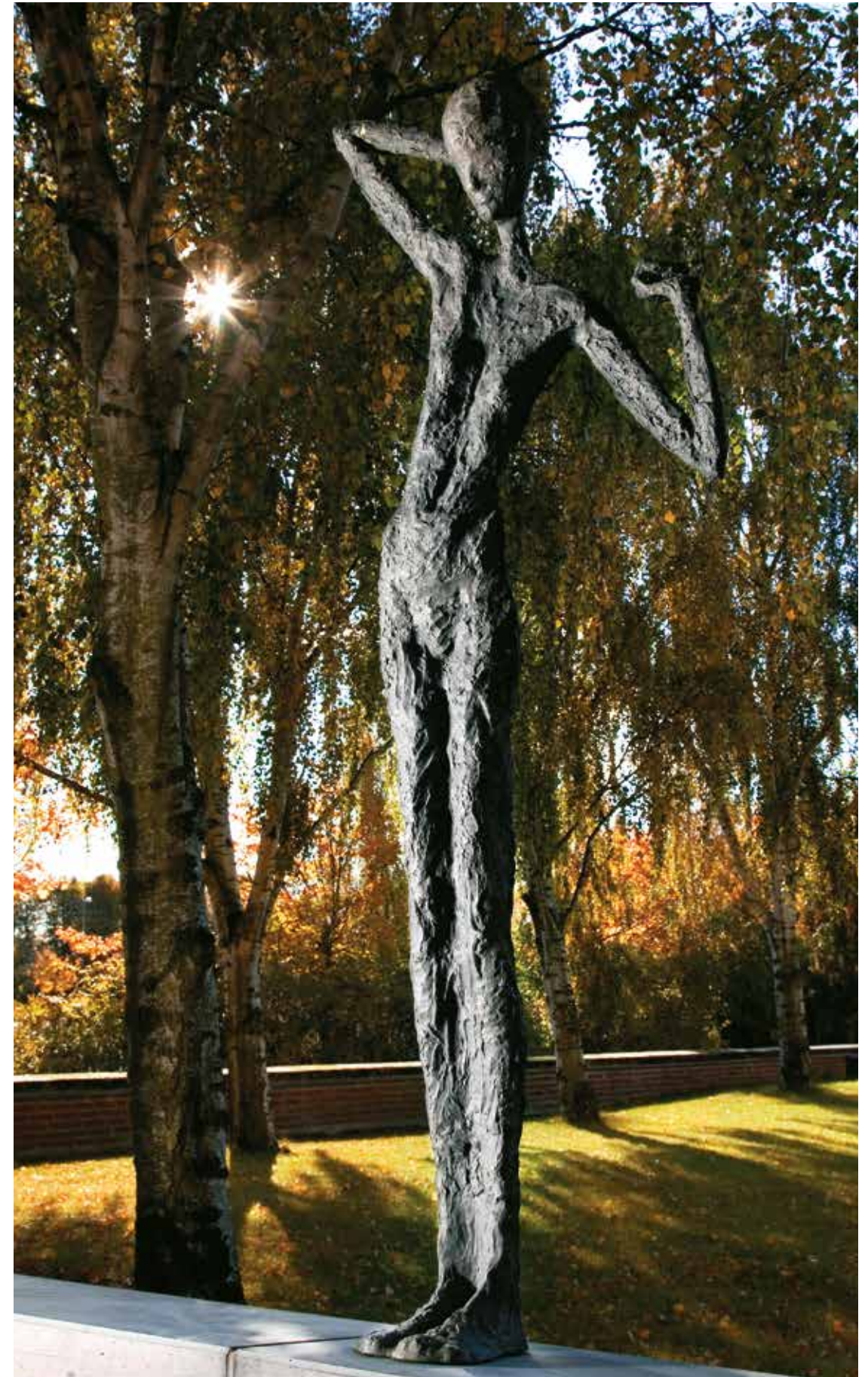
"Maria" bronze 30 cm



"Scream" bronze 95 cm



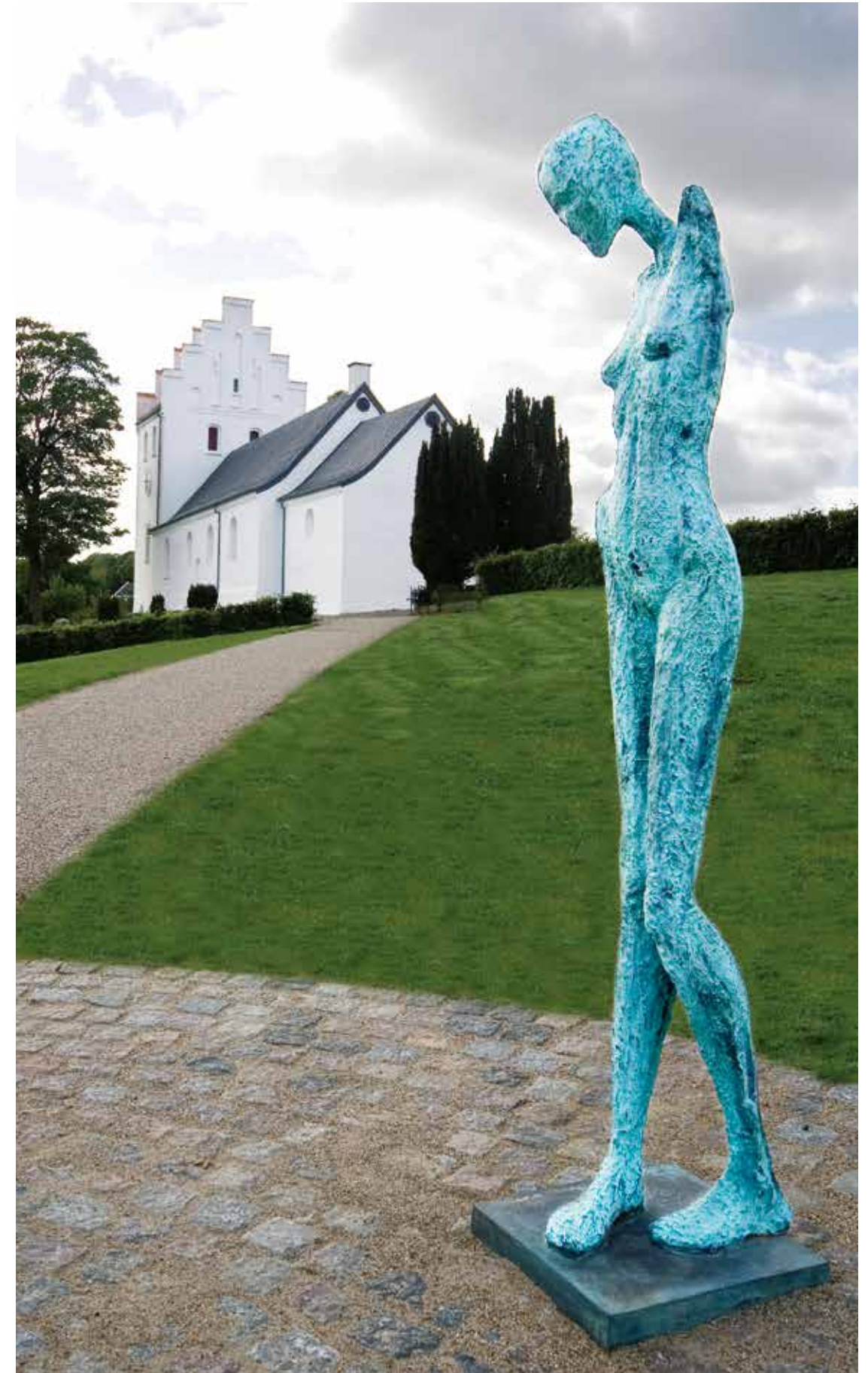
"Self-Care" bronze / granite 1.80 m, Give



"On the way" bronze 1.70 m. Risskov High School. Aarhus



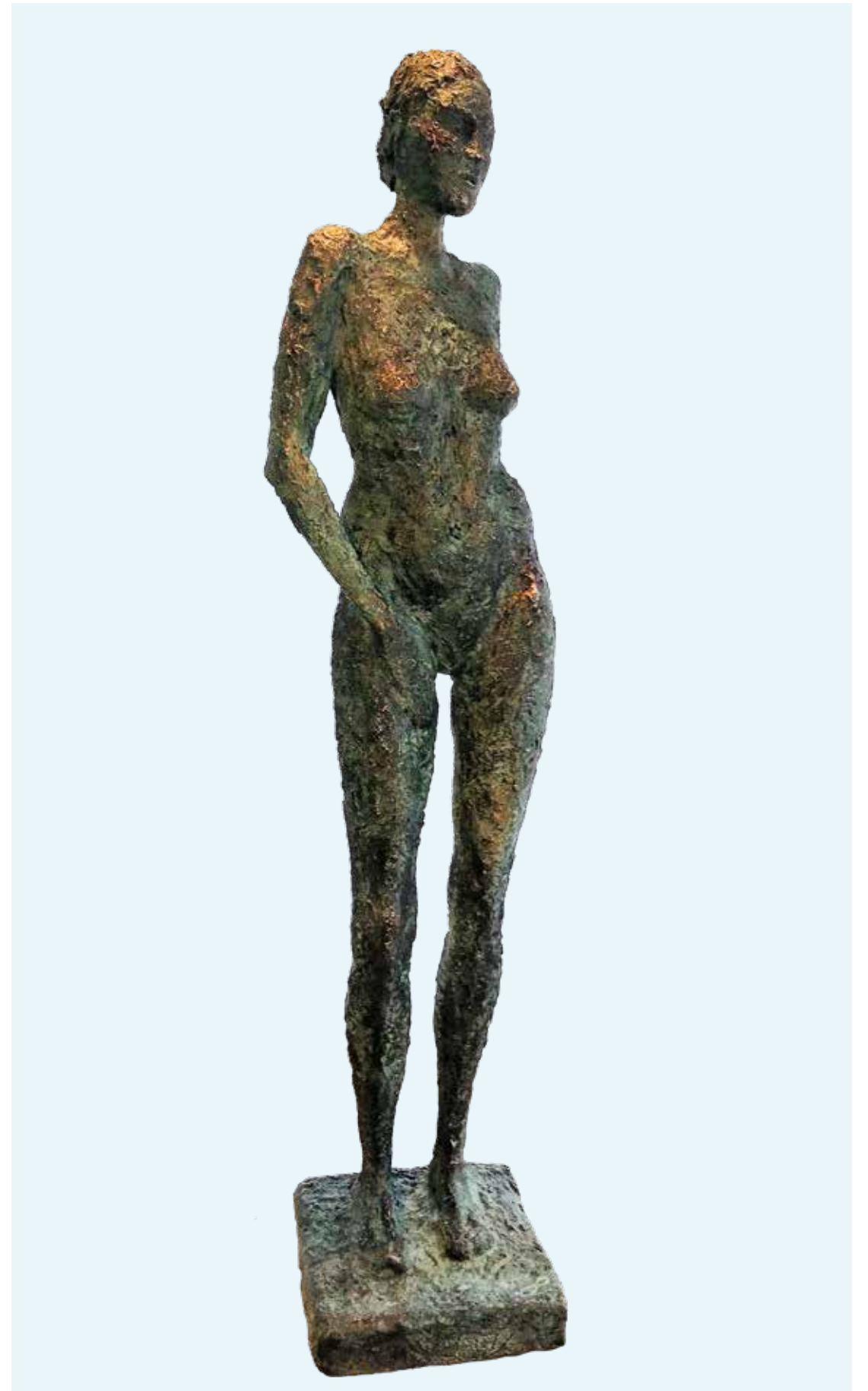
"Spread your beautiful wings" bronze 3,50 m. Skejby, Aarhus



"Madonna" bronze 1.70 m, Givé Church



"Voluntas" (Will) bronze 1.80 m. Egmont Highschool, Hou



"Infinity" bronze 1.80 m high



"Liné has a crucial talent which she cultivates with great intensity. She seems to see her female figures from inside with an implicit complicity that gives her sculptures their own strong personal life."

Erik Meistrup. Art critic and Culture editor

"Wounded" bronze 50 cm L



"In the sculptures of Liné Ringtved Thordarson there is great excitement and dynamism that she transforms with an expressive ease. The delicate sculptures exude great sensitivity and vulnerability."

Donata Holz. Cultural Historian. Germany

"Winged" bronze 44 cm L

"Liné's often peeled and almost pictogramic female sculptures open a strangely immediate vulnerability. A vulnerability that points at me as a human being."

Katja Bjørn. Video Artist



"Peace of Mind" bronze 38 cm



"Line and I have known each other for 10 years. Over the years I have followed her as a sculptor and I have seen an evolution to a very personal and expressive style. We have had some cooperation with exhibitions, with the artist group Colibri and fusion art group Culturesheart. I am looking forward to her future sculptures and our future projects!"

Bettina Winkelmann. Painter and Colleague

"Now You See Me" bronze 55 cm L



"There is a certain kinship with Giacometti, and yet she is completely her own – with an incredibly strong sense of embracing the big story in a simplified form."

Vejle County Magazine

"Desire" bronze 55 cm L

"She loves to translate the sensuality and the languorous postures of the body without staging or counterfeiting. At the crossroads between the Nordic worshipping of the natural and the latin "gourmande" sensibility! One is struck by the lightness and sensuality released from the artist's sculptures. Their power lies in their purity of lines and the femininity character which permeates everything."

From the book "Portraits of Artists", France



"Freya" bronze 40 cm H



"The sculptures are elegant and graceful with an inner balance of calm, but at the same time their shapes and silhouettes break into the surrounding space in a way that makes them appear "alive" to me. To me Line's sculptures are not only aesthetically beautiful, but their expressions imply that they are constantly in motion ..."

Jesper Tae Jensen. Cand. Phil

"Dawn is breaking" bronze 54 cm



"Liné's sculptures symbolize human emotions and experiences in a profound, intense and impressive way. Once you've seen them they stay in your memory for a long time and become part of your emotional baggage."

Paulina de Nijs, Master of Art. Director Graphics Museum Groningen, the Netherlands

"Zen" bronze 25 cm L

miniatures



FREE BRONZE 15 cm



NIA BRONZE 18 cm



NO TITLE BRONZE 7 cm



"WOMAN" SILVER ON BRONZE 15 cm



DREAMER BRONZE 9 cm



TORSO (PLAY) BRONZE 10 cm



TORSO ON BASE BRONZE 13 cm

"All works by Liné are reduced in form, but only to enhance their expressive power. Her passions are displayed in lines and arcs, which she, in a delicately way, transforms into sculptures."

Dr. Frauke Krahe. Cultural Historian. Germany



"Redemption" fiber concrete 1,7 m H

FROM SKETCH TO BRONZE SCULPTURE MADE IN ITALY - NICOLINE KOCH - NICOLINEHUS - AARHUS Ø

PROCESS



"Nicoline Koch" School principal at N. Kochs School 1918-1932. Bronze 2.20 m H.

CULTURESHEART



- FORESTILLING MED KUNSTNERGRUPPEN culturesheart

where DID you sleep last night

19.-22. SEPTEMBER 2013
 Kl: 20.00
 INSTITUT FOR X – HAL A
 GODSBANEN
 Skovgaardsgade 3-5
 8000 Aarhus C

BILLETTER: BILLETNET.DK / I DØREN
 Studierabat www.culturesheart.dk
 eller find os på facebook

Skulptur – Liné Ringtved Thordarson
 Maleri – Bettina Winkelmann
 Sang – Karen Marie Trolborg
 Violin – Sos Nyengaard
 Dans – Julie Brøgger
 Dramaturgi – Mette Hedemann Olsen
 Cello – Chiao-Hui Hwang
 Ord – Trisse Gejl

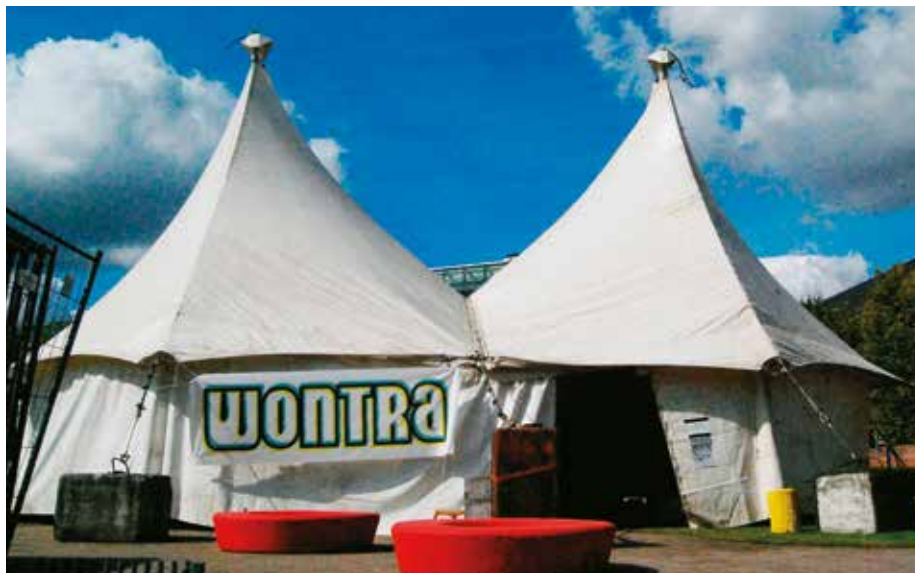


CULTURESHEART MULTI ARTISTIC PERFORMANCE GROUP

Culturesheart is a group of professional artists, who, having won recognition in each their own field, are accustomed to working alone and having full control of the final expression. A longing for the loss of this control is the driving force behind the groups' genesis – a longing to be surprised, enriched, challenged and changed. The performances, "Presence and absence", "On the wings of doubt" and "Where did you sleep last night", have been staged at: Film City Aarhus · Randers regional Theater · Kasernes scenen Aarhus · Concert Hall Aarhus · Institute for X – Godsbanen – Aarhus

WONTRA

ARTNOW



AT WONTRA – ART AND MUSIC FESTIVAL – AARHUS FESTUGE 2008 – ARTISTIC COORDINATOR

It became a meeting place in a creative atmosphere, where four different worlds melted together and gathered around a stage which made space for Aarhus's young underground. Here rock, funk, dance, blues-jazz, DJ's and many others met in a "chill out" atmosphere, created by the young, for the young. Imaginations were set free; the red room, the street corner, grandma's room and acid forest. An experience which provoked the eyes, ears, tastebuds and mind....

THE ART OF RESEARCH – WHEN RESEARCH TURNS INTO ART – SCRIPTWRITER AND CREATIVE ADVISER

The goal of the project was to bring into focus the connection between creativity and research. The inspiring world of research was used to challenge, develop and highlight children and young people's potential as creating artists by letting their creativity be the starting point of an artistic expression carried through by a group of professional artists as well as children and teenagers. At least 600 children and teenagers were involved in the project.

THE ART OF RESEARCH

SNAPSHOTS



GALLERY WOLFSEN, AALBORG



EXHIBITION - GREECE



FILM TO MONACO CHARITY FILM FESTIVAL



ATELIER "THE HOUSE/SPANIEN 19B, AARHUS



VIVANOVA LUXURY LIFESTYLE CHARITY GALA, MONACO



IN ASGER JORN'S HOUSE



ARTISTS AT ESTÉE LAUDER EVENT. ART EXPO, CANNES



YACHT CLUB MONACO



PRINCESSE STEPHANIE. FIGHT AIDS



EXHIBITION AT CHATEAU LA CIMA, NICE



PRINCE ALBERT II CHARITY GALA, MONACO



ART CENTRE. SILKEBORG BAD



MONACO CHARITY FILMFESTIVAL



GALLERY AT COTE D'AZUR



MARIA AWARD FOR HORESTA. 2019

Liné Ringtved Thordarson

Born 1965 in Denmark

Bachelor of Fine Art • Specialized in Sculpture

Education:

Iceland University of the Arts, Iceland	1992 -1996
Ranum High School of Arts, Denmark	1991 -1992
School for Visual Arts, Hjørring, DK	1990 -1991

Exhibitions:

Since 1997 solo and group Exhibitions in Danish and international Galleries, Museums, Art Rooms, Culture Centers, Art Fairs (Art Zürich, Art Monaco, Art Copenhagen, Art Herning), among them Exhibitions in Italy, Greece, Iceland, Germany, Monaco, Switzerland and France (Paris, Cannes, Nice, Bordeaux, Cognac). Gala Exhibitions for Prince Albert II of Monaco Foundation, Monaco Charity Filmfestival and Cannes Filmfestival. Several outdoor bronze Sculptures in Denmark and abroad

Donations:

Prince Albert II of Monaco Foundation 2015-2019
Cannes Filmfestival • 2019
Princess Stephanie of Monaco Aids Foundation • Fight Aids Monaco 2016
Monaco Charity Filmfestival 2015-2016
Domino/Action Against Hunger (ACF) Cannes 2015
Break Cancer – Denmark 2011

Outdoor bronze sculptures:

Egmont High School, Denmark
Risskov High School, Denmark
Favrskov High School, Denmark
Give – Sculpture City of Denmark
Skejbyhave Institution, Aarhus, Denmark
Tarm, Denmark
Vestmanna Islands,Iceland

Stays abroad:

Danish Institute for Art and Science in Rome, Italy
Danish Institute for Art and Science in Athens, Greece
One month, at the Project “People and Lava”, Iceland

Foundations:

BKF Apartment, Berlin, Germany
Asger Jorns Atelier, Læsø, Denmark
Bikuben Foundation Apartment, Berlin, Germany
Oticon Foundation
Beckett Foundation
H.C.Andersen Foundation
Carlsberg Foundation
Association of Danish – Icelandic cooperation
Danish Arts Councils Committee for Performing Arts

Collaborators:

Marshall Murray, France – London – Monaco
Ina Dederer, Zürich, Switzerland
Gallery Ramfjord, Oslo, Norway
Gallery A, Lønstrup, Denmark
Gallery V58, Aarhus, Denmark
Gallery Wolfsen, Aalborg, Denmark
Gallery Brænderigaarden, Horsens, Denmark
Gallery Knud Grothe, Copenhagen
Gallery Oxholm, Copenhagen
Gallery Sapere Aude, Copenhagen
Berlin Art Consulting

Houseartist/Huskunstner, supported from the Danish Art Council:

Art Museum Trapholt
Egå High School • Egmont High School
Risskov High School • Aarhus State High School
Favrskov High School • Aarhus Academy
Egå Youth School • Artist’s Atelier Karavana

Member of:

KKArt (artists’ cooperative)
DBF (Danish visual artists union)
ProKK (professional artists)

Additional Information:

Artistic Coordinator, Creative Adviser and Scriptwriter on Art-events, Festivals, Art Performances and Plays.
Founder of CULTURESHEART – A different multi artistic performance Group
www.culturesheart.dk
Performances: Film City Aarhus • Randers Regional Theater • Kasernes scenen Aarhus
Concert Hall Aarhus
Associated Key2see, Consultant Community in Denmark;
“How can creativity be used in leadership and innovation work”
Video Artist • Teaching Art Classes

Upcoming projects:

2.20 m high bronze Sculpture for Aarhus City, Denmark
7 m high bronze Sculpture in Shanghai (For approval by the Chinese Government)
Exhibitions in galleries and showrroms in Denmark and abroad

www.linethordarson.dk

Instagram: linethordarson

e-mail: line.thor@hotmail.com

Mobile +45 29 66 47 09

Bylageret, Kalkværksvej 11A-B.

Sydhavnen, Aarhus, Denmark

Liné Ringtved Thordarson Sculptures

Copyright: Liné Ringtved Thordarson

Photos: Thomas Kaare Lindblad / Liné Ringtved Thordarson /

Jan Kejser / Nicola Gnesi

Layout: Linda Balle/Liné Ringtved Thordarson

5th english Edition

ISBN 978-87-971589-1-3

EAN 9788797158913

Printed in Denmark, 2021

KKArt

Thanks to all of you who have contributed
with beautiful, funny, profound lyrics about my art

visit www.linethordarson.dk





"Nicoline Koch" 2.20 m bronzesculpture for Aarhus Ø, Denmark

To me the beautiful feelings become even more beautiful in the creative process – the ugly feelings become bearable, and often, over time, beautiful in the creative process. All emotions are allowed and accepted. The sculptures are created from emotions and moods. Out of me and into the material – into the sculpture. A redemptive process where my starting point is honesty to myself. The ugly honesty. The beautiful honesty. Honesty provokes anxiety, it is hard, life-affirming and one of the most beautiful things you can give others and not at least yourself.

Liné Ringtved Thordarson